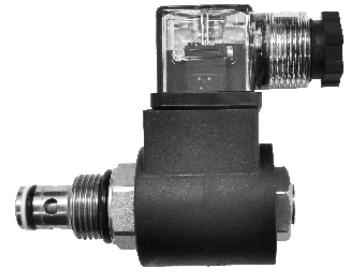
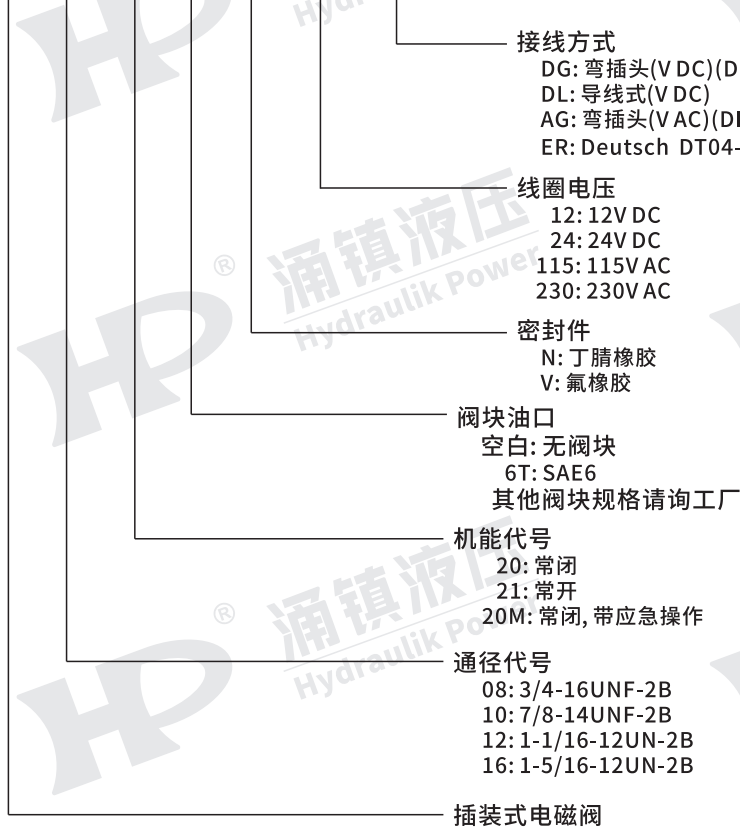


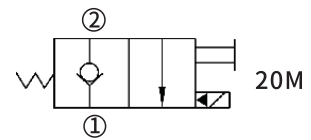
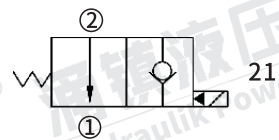
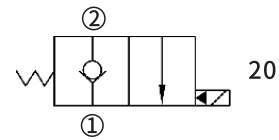
SV08/10/12/16-2※插装式电磁阀

型号说明

SV 08 -20-※ -N -12 -DG



● 液压符号



● 规格表

型号	额定压力 (bar)	最大流量 (l/min)	内泄漏量 (ml/min)	电压		功率
SV08	210	30	0.25(207bar)	DC	12 V	DG:20W
SV10	210	60	0.25(240bar)		24V	DL:20W ER:22W
SV12	250	113	0.35(240bar)	AC	115V	AG:14.4W
SV16	210	151	0.35(207bar)		230V	
电压范围	正常电压的85%~115%之间					
工作温度	-40~120°C					
过滤精度	≤25 μm					
适用油液	石油基液或带润滑成份的合成液, 粘度范围为 7.4~420 cSt					